

TECHNICAL BULLETIN



19 Motivation Dve Wangara, WA, 6065 AUSTRALIA
T +61 8 9302 4000 | FREE 1800 999 196 | F +61 8 9302 5000

MI6214

Antiscalant

Product Description

MI6214 is a liquid deposit control agent designed to inhibit the formation of calcium-based scales in mill water lines, pump housings and leach pad sprinklers. **MI6214** is a highly concentrated product which exhibits excellent stability characteristics under the wide variety of conditions encountered in mill water circuits.

MI6214 is one of a series of Environex scale inhibitors which have been specifically researched and developed for the mining industry. **MI6214** is particularly effective in preventing both calcite and gypsum scales and is also effective in the prevention of other calcium based scales. The product functions by both threshold interference with the growing crystals at the micro crystal stage of formation and by dispersion of these modified crystals to give unparalleled performance in the prevention of scale in the water circuits.

Product Benefits.

Application of **ENVIRONEX MI6214** in the management of scale inhibition in process water systems can provide the following benefits:

- 💧 Prevention of calcium based scale including calcite and gypsum scales
- 💧 Dispersion of sludges in low flow sections of the process water system
- 💧 Economical treatment costs
- 💧 Minimised on-site product storage requirements and deliveries.

Application

The optimum dosage of **MI6214** scale inhibitor required for any given application will depend on a number of factors including:

- 💧 The nature and extent of the scaling problem,
- 💧 The characteristics of the particular system,
- 💧 Degree of control required.

Water parameters such as pH, alkalinity, turbidity, sulphates and hardness concentrations should be considered when selecting the dose rate to be applied. Your **ENVIRONEX** representative should be consulted to provide the optimum product dosage for your system.

Contact your **ENVIRONEX** representative for specific recommendations for your application.

Use Rate

Use rates usually vary between 0.5 ppm to 5 ppm depending on the scaling

TECHNICAL BULLETIN



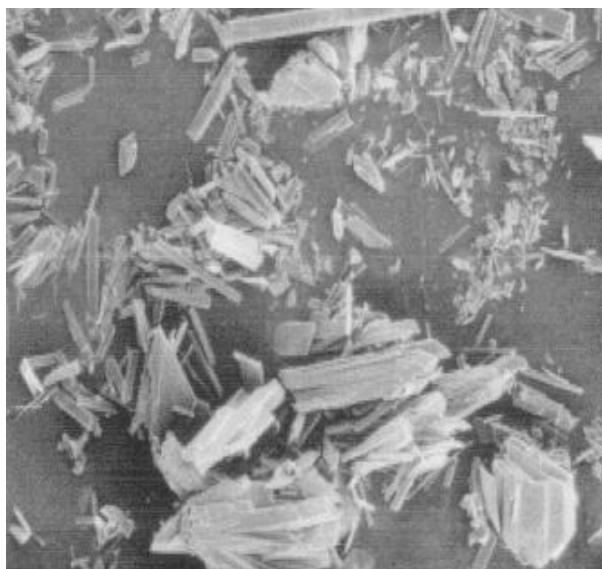
19 Motivation Dve Wangara, WA, 6065 AUSTRALIA
T +61 8 9302 4000 | FREE 1800 999 196 | F +61 8 9302 5000

tendency of the water to be treated and other factors such as degree of contamination and water circuit parameters. In many instances the overall dose rate can be reduced by satellite dosing to points of scale inducement.

- Test work performed on a static test rig with mineral process water comparing **MI6214** against a current industry standard at the same dose rate showed the superior performance of **MI6214** in delaying the onset of mixed calcite/gypsum scale.

Feeding and Control

MI6214 scale inhibitor should be fed as delivered to the thickener overflow, upstream of circulating pumps or locations in the circuit where scaling is most severe. The feed equipment should be of plastic or corrosion resistant construction.



Gypsum and Calcite Crystals Modified with **MI 6214**

Packaging

- **MI6214** Scale Inhibitor is available in 200 kg drums, and in 1000 kg IBC's.

Monitoring

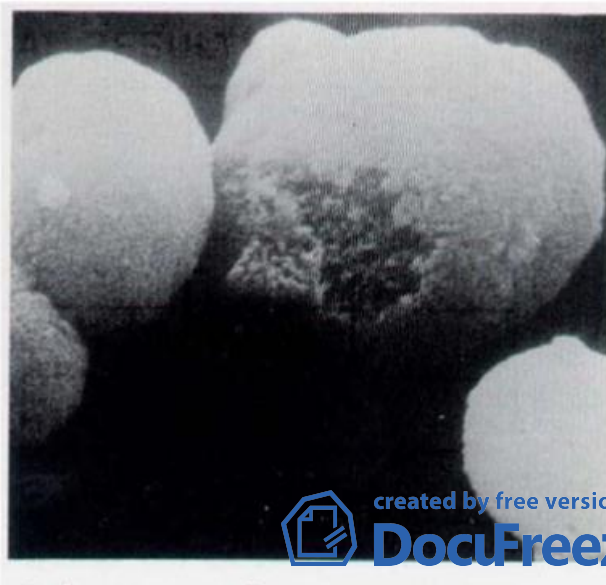
- Product effectiveness should be monitored with **ENVIRONEX'S** retractable scale coupons located in the circuit immediately after the addition point.

Handling and Storage.

- Read the label and Material Safety Data Sheet for complete handling information before using this product.
- **MI6214** may be stored up to one year.

Quality

ENVIRONEX International is licensed as a Quality Endorsed Manufacturing Company under ISO9001.



created by free version of

DocuFreezer